



Appendix C: Community Outreach Materials

Page Intentionally Left Blank

PROOF OF PUBLICATION

STATE OF CALIFORNIA }
 } SS
COUNTY OF LOS ANGELES }

I am a citizen of the United States and a resident of the County aforesaid; I am over the age of eighteen years, and not a party to or interested in the above entitled matter. I am the assistant principal clerk of the printer of the *Acton Agua Dulce News*, (*Acton Agua Dulce Weekly News*) a newspaper of general circulation, printed and published weekly in the Community of Acton, county of Los Angeles, and which newspaper has been adjudicated a newspaper of general circulation by the Superior Court of the County of Los Angeles, State of California, under date of February 8, 1989, Case Number 9391; that the notice, of which the annexed is a printed copy has been published in each regular and entire issue of said newspaper and not in any supplement thereof on the following dates, to wit:

7/15, 7/22

in the year 2013

I certify (or declare) under penalty of perjury that the foregoing is true and correct.


M. Gayle Joyce

Public Notice

The Antelope Valley Integrated Regional Water Management (IRWM) Program is preparing an update to the Antelope Valley IRWM Plan adopted in 2007. IRWM Plans are regional plans designed to improve collaboration in water resources management. The first IRWM Plan for Antelope Valley was published in 2007, following a multi-year effort among water retailers, wastewater agencies, storm water and flood managers, watershed groups, the business community, agriculture representatives, and non-profit stakeholders to improve water resources planning in the Antelope Valley IRWM Region.

In response to changes in the State's integrated planning requirements, the Antelope Valley IRWM Program is preparing an update to the 2007 IRWM Plan. This update is an opportunity to incorporate additional stakeholder interests into the IRWM Plan, and revisit the Plan in light of changes that have occurred since 2007.

The 2007 IRWM Plan and information concerning the update, may be viewed online at <http://avwaterplan.org>.

Questions regarding the AV IRWM update should be directed to: Aracely Jaramillo at AJaramillo@dpw.lacounty.gov

This public notice is being published in accordance with section 10343 of the California Water Code.

Submitted by an Advisory Team member representing Industry and Commerce

Page Intentionally Left Blank



[Home](#) [Projects](#) [Grants](#) [Stakeholders](#) [Governance](#) [Plan](#) [Outreach](#) [Library](#) [F.A.Q.](#) [Contact Us](#)

STAKEHOLDER MEETINGS

November 20, 2013
[AMRVM] IRVM Stakeholder Meeting

November 20, 2013
[AMRVM] Salt and Nutrient Management Plan Stakeholder Meeting

PASTE EVENTS

GET INVOLVED

Subscribe or Login to manage IRWMP event notifications.

Submit Your Projects

Press Room

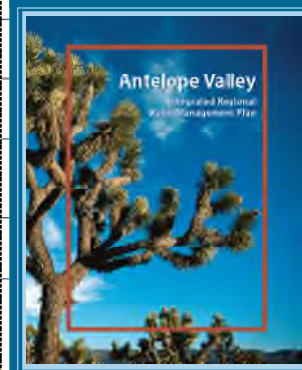
CLEARCHANNEL
Interview with LACWWD's Adam Ariki

California's Water Crisis:
A 7-Step Action Program
California's Water Crisis

Antelope Valley Integrated Regional Water Management Plan

The Antelope Valley Integrated Regional Water Management Plan (IRWMP), A.K.A. The AV Water Plan, is a multi-county collaboration effort developed to address regional concerns about water supply reliability, water quality, flood protection, environmental resources and land use management in the Antelope Valley.

ANNOUNCEMENT:



The Antelope Valley Water Plan is now COMPLETE and has been posted for review.

You can read the document by clicking on the [icon to the left](#).

SPOTLIGHT

NEW! Prop 84, Round 2 Implementation Grant Proposal – BCSD Arsenic Management Feasibility Study (PDF, 5MB)

Proposition 1E, Round 2 Stormwater Flood Management Grant Application Littlerock Reservoir Sediment Removal Project (PDF, 58MB)

Salt/Nutrient Management Plan - Scope of Work (PDF, 24 KB)

[SEE WHAT OUR STAKEHOLDERS HAVE TO SAY!](#)

Page Intentionally Left Blank

From: eNotify@dpw.lacounty.gov [<mailto:eNotify@dpw.lacounty.gov>]
Sent: Friday, November 01, 2013 12:28 AM
To: Brenda Ponton
Subject: AVIRWM Stakeholder Group Event Update



The LADPW offers this free e-mail based service to notify interested parties in a timely manner of news and events of specific interest. You are receiving this e-mail because you have signed up with the LADPW eNotify system. If you have received this e-mail in error or wish to unsubscribe please [click here](#).

Below are the upcoming events that match your preferences:

If you are interested in attending one of these events, click on the "Send me Reminder" link to receive a reminder e-mail just before the event happens! You will be given the option to schedule the exact date you would like to receive the reminder e-mail.

Name	Date/Time	Location	View Map	Driving Directions	Send me Reminder
[AVIRWM] IRWM Stakeholder Meeting	11/20/2013, 10:00 AM - 11:00 AM	Larry Chimbole Cultural Center - Lilac Room at Palmdale City Hall 38350 Sierra Highway Palmdale,		Get Driving Directions	Send me Reminder

		93550			
[AVIRWM] Salt and Nutrient Management Plan Stakeholder Meeting	11/20/2013, 11:00 AM - 12:00 PM	Larry Chimbole Cultural Center - Lilac Room at Palmdale City Hall 38350 Sierra Highway Palmdale, 93550		Get Driving Directions	Send me Reminder

[View All Antelope Valley IRWM Stakeholder Group Events](#)

Your eNotify preferences:

E-mail Format: HTML
 Zip Code 1: 93535
 Zip Code 2: 93534
 Coverage Area: All LA County

You can edit these by logging into your online account: [eNotify Login](#)

If you have questions, comments or suggestions, please [contact us](#).

For more information on Antelope Valley Integrated Regional Water Management activities, please visit www.avwaterplan.org.

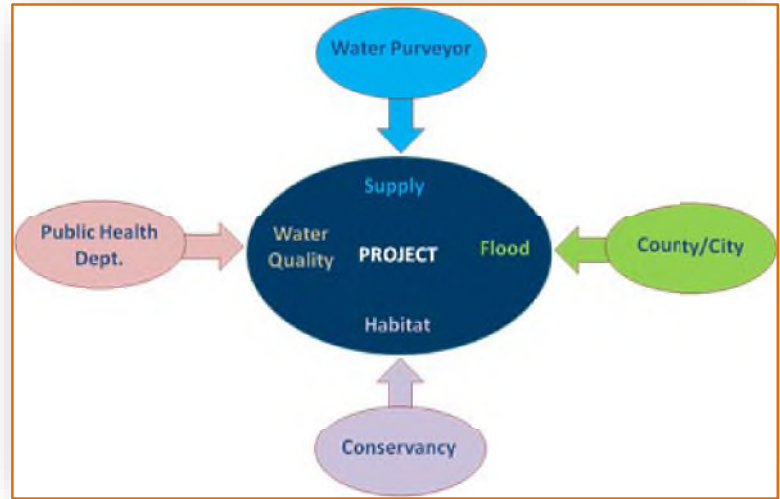
If you would like to be removed from this distribution list, please login to eNotify [Registration Site](#) to manage your preferences or to completely unsubscribe from all eNotify notifications [click here](#).

Antelope Valley Integrated Regional Water Management

What is integrated regional water management?

Integrated Regional Water Management (IRWM) is a collaborative effort to manage all aspects of water resources in a region. IRWM crosses jurisdictional, watershed, and political boundaries; involves multiple agencies, stakeholders, individuals, and groups; and attempts to address the issues and differing perspectives of all the entities involved using mutually beneficial solutions.

This State program encourages local agencies to work cooperatively to manage local and imported water supplies to improve quality, quantity, and reliability.

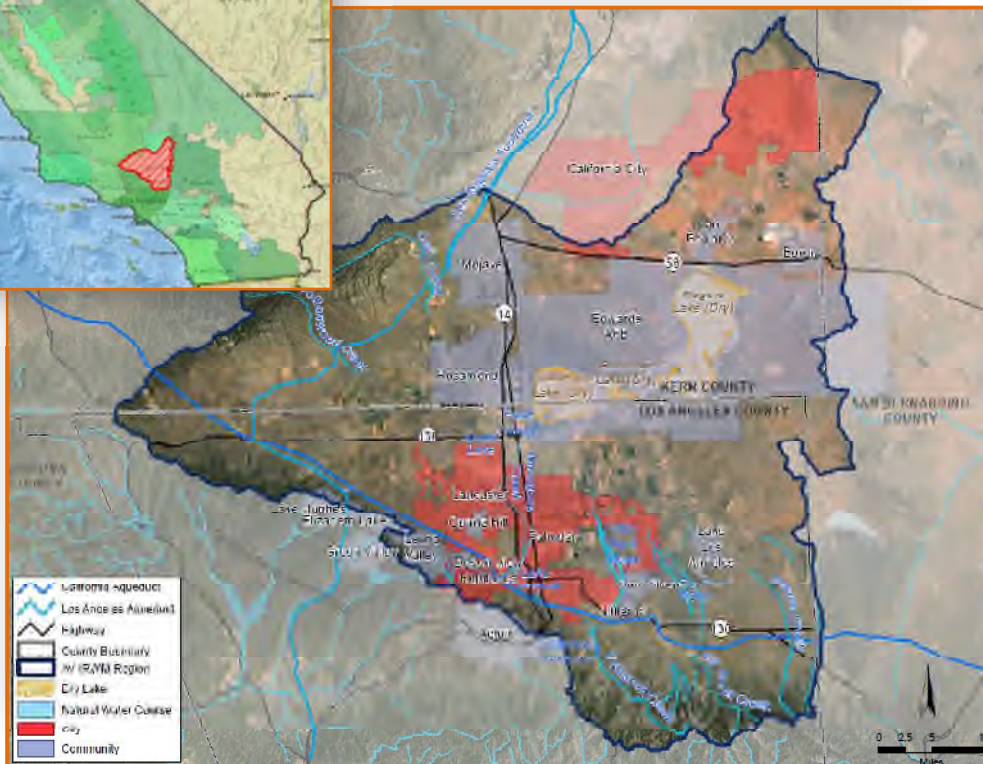


The IRWM Program organizes the State into Regions based on shared challenges & responsibilities

The Antelope Valley is one of 48 regions in the State of California. Regions are defined as contiguous geographic areas encompassing the service areas of multiple local agencies, and are defined to maximize the opportunities to

integrate water management activities. Each region is self defined, and is approved by the California Department of Water Resources. Approved Regions are eligible to apply for grant funding.

The Antelope Valley Region encompasses approximately 2,400 sq miles in northern Los Angeles County, southern Kern County, and western San Bernardino County.



Numerous Antelope Valley stakeholders have been engaged in the Program since 2006

Leaders and agencies in the Antelope Valley joined together to form a Regional Water Management Group (RWMG):



Other stakeholders also participate in the Antelope Valley IRWM process:

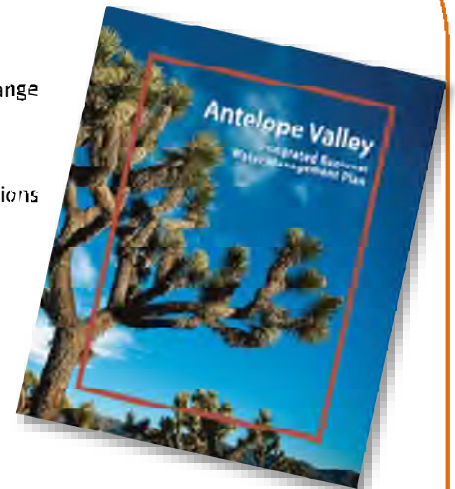
- Antelope Valley Board of Trade
- Antelope Valley Conservancy
- Antelope Valley Resource Conserv. District
- Antelope Valley United Water Purveyors
- Building Industry Association
- California Dept. of Fish & Game
- California Dept. of Public Health
- California Dept. of Water Resources
- CA State Water Resources Control Board
- California State Parks
- City of Boron
- City of California City
- Edwards Air Force Base
- Kern County Board of Supervisors, Dist. 2
- Kern County Farm Bureau
- Kern County Planning Department
- Lahontan Reg. Water Qual. Control Board
- Lake Los Angeles Town Council
- Leona Valley Town Council
- LA County Board of Supervisors
- LA County Dept. of Public Works
- LA County Dept. of Regional Planning
- LA County Farm Bureau
- Mojave Desert Mountain Resource Conservation and Development Council
- National Education Association
- National Resources Conservation Service
- Roosevelt Town Council
- Sierra Club
- Sundale Mutual
- U.S. Department of Agriculture
- Westside Park
- White Fence Farms

Stakeholders have collaborated to develop water management objectives, to develop projects, and to write an IRWM Plan that is periodically updated

The Region's objectives help to manage current and future resources.

- Water Supply
- Water Quality
- Flood Management
- Environmental Resources Management
- Land Use Planning/ Management
- Climate Change

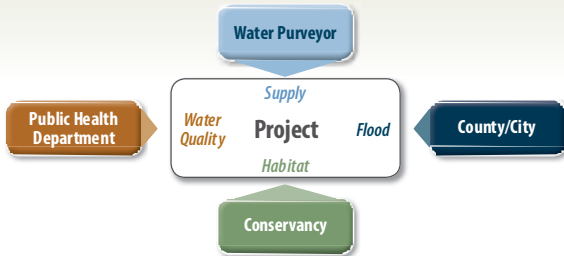
- Provide reliable water supply and adapt to climate change
- Establish a supply contingency plan
- Stabilize groundwater levels
- Meet regulatory requirements and customer expectations
- Protect and maintain aquifers
- Protect streams and recharge areas
- Maximize beneficial use of recycled water
- Reduce negative impacts of stormwater, urban runoff, and nuisance water
- Preserve open space and natural habitats, and enhance water resources and species in the Region
- Maintain agricultural land use
- Meet growing demand for recreational space
- Improve integrated land use planning
- Mitigate against climate change



BECOME AN IRWM STAKEHOLDER!
Please visit www.avwaterplan.org or contact the Los Angeles County Department of Public Works at (626) 300-3353 for stakeholder meeting information.

Antelope Valley Integrated Regional Water Management (IRWM)

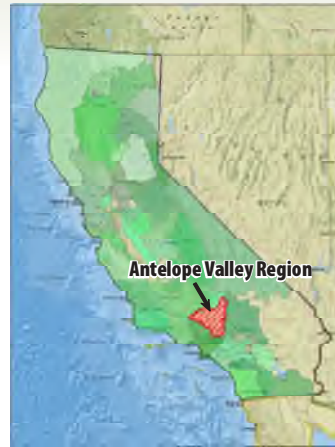
The IRWM Program was developed to encourage collaboration on water issues



Integrated Regional Water Management (IRWM) is a collaborative effort to manage all aspects of water resources in a region. IRWM crosses jurisdictional, watershed, and political boundaries; involves multiple agencies, stakeholders, individuals, and groups; and attempts to address the issues and differing perspectives of all the entities involved using mutually beneficial solutions.

This State program encourages local agencies to work cooperatively to manage local and imported water supplies to improve quality, quantity, and reliability.

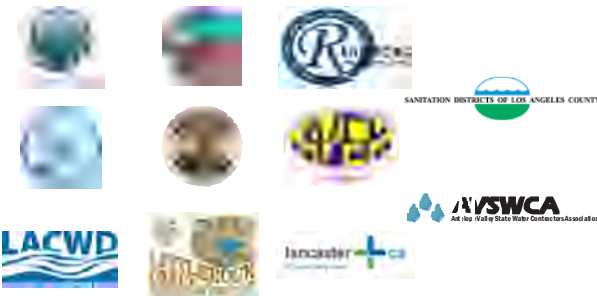
The State is organized into IRWM Regions based on shared challenges & responsibilities



The Antelope Valley Region is one of 48 regions in the State of California. Regions are defined as contiguous geographic areas encompassing the service areas of multiple local agencies, and are defined to maximize the opportunities to integrate water management activities. Each region is self-defined, and is then approved by the California Department of Water Resources. Approved Regions are eligible to apply for grant funding.

Numerous Antelope Valley stakeholders have been engaged in the Program since 2006

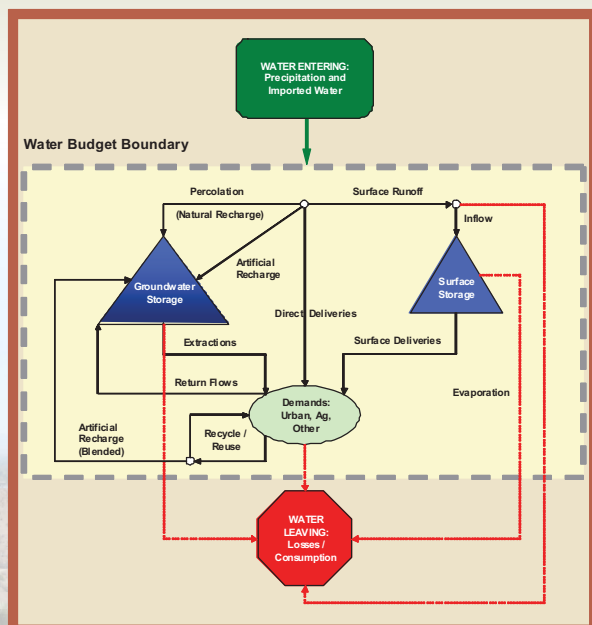
Regional Water Management Group



Other Stakeholders

- Antelope Valley Board of Trade
- Antelope Valley Conservancy
- Antelope Valley Resource Conservation District
- Antelope Valley United Water Purveyors
- Building Industry Association - Antelope Valley Chapter
- California Dept. of Fish & Game
- California Dept. of Public Health
- California Dept. of Water Resources
- California State Water Resources Control Board
- California State Parks
- City of Boron
- City of California City
- Edwards Air Force Base
- Kern County Board of Supervisors, District 2
- Kern County Farm Bureau
- Kern County Planning Dept.
- Lahontan Regional Water Quality Control Board
- Lake Los Angeles Town Council
- Lake Los Angeles Park Association
- Leona Valley Town Council
- Los Angeles Co. Board of Supervisors Office, District 5
- Los Angeles Co. Dept. of Public Works, Watershed Management Division
- Los Angeles Co. Dept. of Regional Planning
- Los Angeles Co. Farm Bureau
- Mojave Desert Mountain Resource Conservation and Development Council
- Mutual Water Companies
- National Education Association, Antelope Valley
- National Resources Conservation Service
- Roosevelt Town Council
- Sierra Club
- Sundale Mutual Water
- Town Councils
- Tybrin Corporation at Edwards Air Force Base
- U.S. Department of Agriculture
- Westside Park Mutual Water Company
- White Fence Farms Mutual Water Company

The Region has a complex water balance



Stakeholders have collaborated to develop water management objectives and to write an IRWM Plan that is periodically updated

Water Supply

- Provide reliable water supply and adapt to climate change
- Establish a supply contingency plan
- Stabilize groundwater levels

Water Quality

- Meet regulatory requirements and customer expectations
- Protect and maintain aquifers
- Protect streams and recharge areas
- Maximize beneficial use of recycled water

Flood Management

- Reduce negative impacts of stormwater, urban runoff, and nuisance water
- Optimize the balance between existing beneficial uses of stormwater and capturing stormwater for new uses

Environmental Resources Management

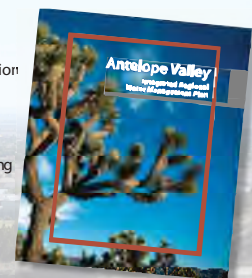
- Preserve open space and natural habitats, and enhance water resources and species in the Region

Land Use Planning/Management

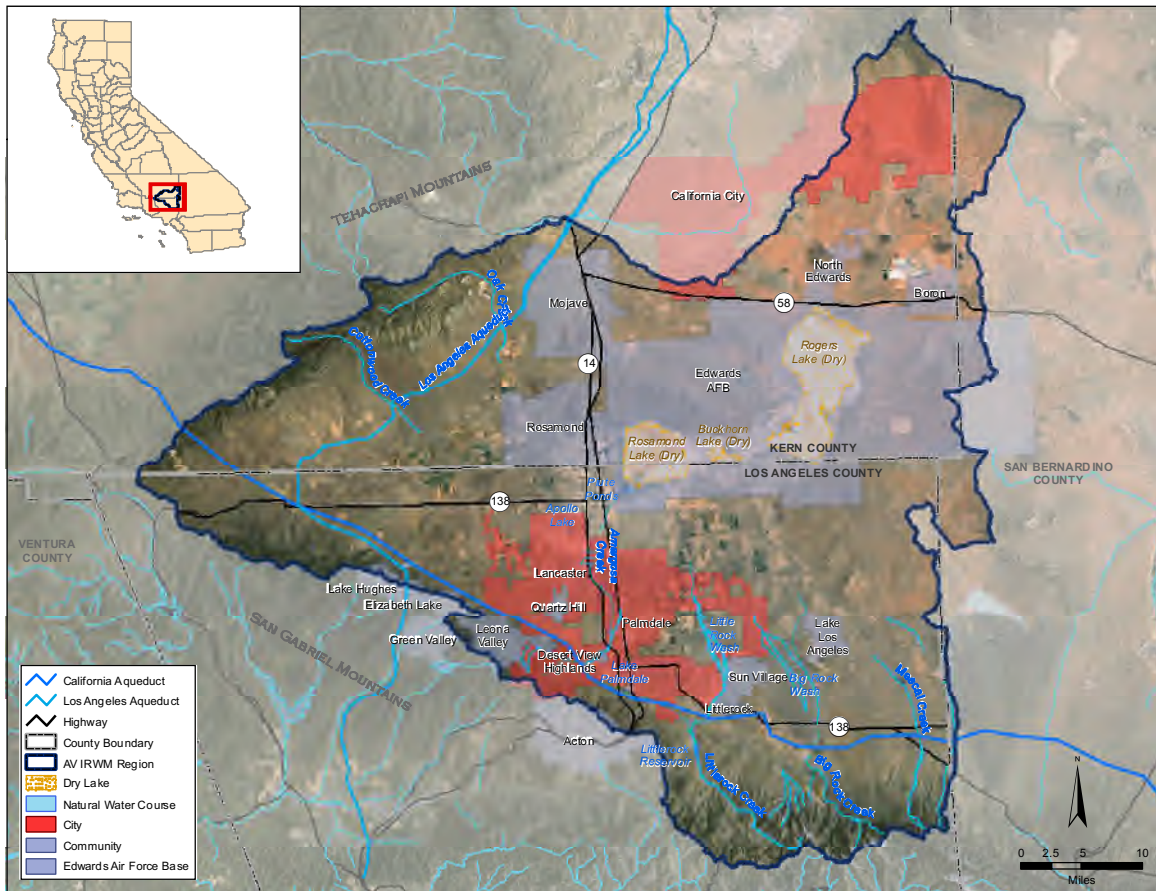
- Maintain agricultural land use
- Meet growing demand for recreational space
- Improve integrated land use planning to support water management

Climate Change

- Mitigate against climate change



The Antelope Valley IRWM Region is made up of many unique cities and communities.



The Antelope Valley communities are working together through IRWM to implement water projects for the benefit of all.

